

unitech

unitech
Company Profile

Vision

Honesty & integrity

Commitment to excellence

Collaborative success

Shared achievements

Table of Content

- About Unitech
- Milestones
- Solutions-Oriented Products
- Innovative R & D Approach
- Quality Promise
- Manufacturing
- Comprehensive Service & Support
- Global Operation
- Contact Us

About Unitech

People Who Make a Difference

Unitech was founded in 1979 in Taipei, Taiwan. As a global provider of automatic identification and data capture technologies, Unitech manufactures a wide range of rugged mobile computers, RFID readers and intelligent integrated terminals. Unitech products bring value to customers throughout the world in various industries, such as transportation, logistics, retail, banking, warehousing and manufacturing. Our goal is to develop solutions that help our customers achieve higher productivity and more efficient operations.

Quality Begins with Design

During the design process, all products must perform various reliability tests to ensure product suitability under adverse conditions. Unitech closely monitors each phase of the development process with strict production and procedural controls. In order to ensure product conformance, Unitech employs various control systems including, product life cycle management, manufacturing execution management and Oracle enterprise.

Global Operation

Unitech products are available in over 35 countries, with sales, distribution and technical support delivered by six subsidiaries in North America, APAC, China, Europe, Japan and Taiwan. These subsidiaries provide Unitech with access to the most up-to-date market information on a local basis, thereby enabling Unitech to quickly anticipate changing market needs.

Social Responsibility

Unitech understands that it is part of the global community, and demonstrates its commitment to social responsibility by participating in a number of charity programs across the globe. Unitech is also committed to environmental responsibility and has integrated Green Systems into its product design, production and service operations.



The Milestone

- 1979 · Unitech Computer Founded in 1979
- 1985 · Entered the AIDC industry
- 1996 · ISO9002 and ISO 9001 Certified
- 1997 · Honored with the National Award of Small and Medium Enterprises
- 1998 · Unitech Computer listed on the Taiwan Stock Market (Code: 2412)
· Unitech PT600 won Symbol of Excellence of Taiwan
- 1999 · Unitech MR350MKII won Symbol of Excellence of Taiwan
- 2000 · Unitech PT900 won Symbol of Excellence of Taiwan
- 2001 · Unitech Distribution and Logistics Center began its operation
· Unitech installed Product Data Management System (PDM)
- 2002 · Unitech PT930-1D and PT930-MSR won Symbol of Excellence of Taiwan
· Unitech PT930 won National Award of Excellence
- 2003 · Unitech installed Enterprise Resource Planning System (ERP)
- 2004 · Unitech PA960 and MS860 won Symbol of Excellence of Taiwan
- 2005 · Unitech PA980, MS360, MS830, MS330 and MR550 won Symbol of Excellence of Taiwan
· Launched Unitech ADC Portal
· Launched Unitech Green Product System
- 2006 · Unitech PA982, PA966, PA967, PA600, HT660, MR650 won Symbol of Excellence of Taiwan
· Unitech PA950 won iF Product Design Award 2006
· Unitech PA600 won Symbol of Excellence of Taiwan, Gold Medal
· Unitech installed MES Product Tracking System
- 2007 · Unitech PA600 won iF Product Design Award 2007
· Unitech RH767 won Symbol of Excellence of Taiwan
- 2008 · Unitech Computers spun off its ADC Group to form separate business entity known as unitech electronics co., ltd.
· Launched Unitech Product Lifecycle Management System
- 2009 · unitech electronics co., ltd. Listed on Taiwan Over-the-Counter market (Code: 3652)
· Unitech PA600MCA and PA968 won Symbol of Excellence of Taiwan
- 2010 · Unitech PA550 won iF Product Design Award 2010
· Unitech PA550 won Symbol of Excellence of Taiwan
· Unitech New Global Website Launch



Solution-Based Products

As the scope of operations steadily becomes broader and deeper, Unitech is evolving into an AIDC solution provider by offering comprehensive, integrated middleware in addition to device hardware. Unitech's aim is to help business partners shorten application development time and to reduce the total cost of ownership for customers. High quality and feature-rich hardware, combined with access to and an understanding of customers' business processes are key factors to success in this area.



Product Groups

Enterprise Mobile Computer		Auto ID	Integrated Security & Home Automation
Field Service Healthcare Logistics	Retail Transportation Warehousing	Healthcare Retail Warehousing	Time & Attendance Home Automation Healthcare

Introduction of Enterprise Mobile Computer

Since 1999, Unitech enterprise mobile computers have been delivering unbeatable performance to customers in diverse industries around the globe. With a Windows operating system, advanced wireless connectivity, and a wide range of data collection options including 1D scanner, 2D imager, and RFID readers, Unitech rugged mobile computers have established themselves as key players in the AIDC market.

Designed to optimize productivity and efficiency with their compact, ergonomic form factor, Unitech enterprise mobile computers are IP-rated against moisture and dust, feature sunlight-readable LCDs for outdoor use, and in some cases, are equipped with an antimicrobial housing (PA600 MCA), suitable for usage in even the most demanding settings.

Through collaboration with channel partners, these Unitech devices provide complete enterprise mobility solutions to various vertical markets including field service, healthcare, logistics, retail, transportation and warehousing.

Introduction of Auto ID Reader

Unitech developed the Auto ID Reader to include with the RFID UHF Fixed Reader (RS700) and 1D/2D/Laser barcode scanners to provide the best data collection performance and coverage. Both readers are designed for maximum device uptime, reducing repair costs and overall cost of ownership.

With a high-performance scan engine and comprehensive middleware, the Unitech auto ID readers are built for precision and business profitability. Featuring easy configuration, auto-discrimination, multiple interface options, and data-editing functionality, Unitech continues to satisfy customer needs with updated wireless and data-collection technologies.

Introduction of Integrated Security & Home Automation

The TASHI (Time & Attendance, Surveillance, Home Automation and Intercom) line represents a versatile solution consolidating a number of time management, security and communication applications in one comprehensive platform. Featuring various products ranging from entry-level terminals to advanced multi-function controllers, each TASHI terminal includes integrated access, intercom and security functions for residential and commercial applications. Target markets include residential housing, community, office buildings, hospitals, factories, hotels and schools.

Unitech Solutions



Field Service

From the ultra rugged handhelds for harsh environments, to enterprise PDAs for less rugged applications, Unitech has a mobile device to meet your needs. Featuring an integrated barcode scanner, durable construction and multiple wireless connectivity options, Unitech mobile solutions empower the field workforce at the point of customer contact.



Government

Modern law enforcement information technology allows for comprehensive system integration and real-time updates. Unitech provides all necessary functionality and versatility in one durable mobile computer.



Healthcare

Today, healthcare solution providers need partners that can provide high-quality products along with unmatched service and support. Unitech understands how to create a strong partnership and strives to be a leader in healthcare data collection applications. Healthcare solution providers will benefit from Unitech's innovative healthcare product solution, shorter software development cycle and unsurpassed service.



Logistics

Unitech mobile computers offer seamless integration with information management systems, providing a comprehensive package for increasing customer satisfaction. Gain access to information such as delivery times, situation of goods, route changes, on the spot invoicing, and GPS fleet tracking.



Retail

Unitech helps retailers reduce time-consuming activities and deliver more efficient service to customers. Mobile computers eliminate handwriting mistakes and can be integrated into any operational processes with limited training. Unitech mobile computers allow retailers to manage ordering and inventory more precisely and gain a greater understanding of how products are being sold, which provides marketing insight and better marketing awareness.



TASHI

The TASHI line represents a versatile solution combining a number of time management, security and communication applications in one comprehensive platform. Featuring various products ranging from entry-level terminals to advanced multi-function controllers, each TASHI terminal includes integrated access, intercom and security functions for residential and commercial applications. Target markets include residential housing, community, office buildings, hospitals, factories, hotels and schools.



Warehousing

Warehouses face the difficulties of complex stock management processes including inventory, delivery, order-taking, dispatching and tracking. Unitech handheld terminal solutions offer feature-rich specifications to streamline warehouse operations such as RFID capability, wireless connectivity and powerful barcode scanning. Unitech handhelds configure seamlessly with back-end systems, are ergonomically designed and easy to operate.

Product- Mobile Computer & Handheld Terminal



The Rugged Mobile Computer product line is defined by ergonomic design, versatility and durability for use in enterprise, industrial and harsh environments. Our Windows-based, handheld devices feature a wide range of connectivity options, development software and strong database integration. We develop mobile computers that provide our customers with value-driven solutions that meet their business needs.

When Unitech began developing mobile computers, the DOS-based handheld played an important role in providing users with an affordable, yet rugged, portable data collection solution. As technologies evolve and business applications become more complex, continuous improvements to the handheld terminal are necessary to meet customer needs.

In response to these market demands, Unitech has introduced a Windows CE-based device to the Handheld Terminal line. With wireless connectivity and a color touch screen, this device is an ideal solution for various applications ranging from warehouse to retail.

Product- RFID Handheld & Fix Reader



In collaboration with our channel partners to embrace new business opportunities from radio frequency technology, Unitech provides RFID solutions for global supply chain, field service and healthcare. This RFID portfolio includes UHF and HF handheld readers, UHF fixed reader, and RFID client middleware. To integrate Unitech readers into existing IT infrastructures, Unitech forms alliances with leading IT companies and RFID global organizations.

The Unitech RFID UHF fixed reader is suited for smart shelf or inventory gate-reading applications and is capable of working in harsh environments such as warehouses or logistics centers.

Product- Barcode Scanner / TASHI



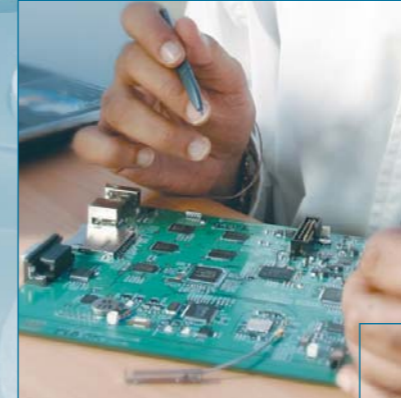
Unitech barcode scanners are ergonomically designed to increase productivity and reduce fatigue. Featuring easy configuration, auto-discrimination, multiple interface options, and data editing functionality, Unitech continues to satisfy customer needs with new wireless and imager scanning technologies. Unitech barcode scanners offer numerous form factor options, while providing the best scanning rate and coverage.



The TASHI line represents a versatile solution combining a number of time management, security and communication applications into one comprehensive platform. Featuring various products ranging from entry-level terminals to advanced multi-function controllers, each TASHI terminal includes integrated access, intercom and security functions for residential and commercial applications. Target markets include residential housing, community, office buildings, hospitals, factories, hotels and schools.

Innovative R&D - Engine of Success

With R&D centers in Taipei, Los Angeles and China, Unitech's combination of innovative engineers and systematic cooperation amongst its research teams make for a strong technological foundation. An internet-based product development and project management system serve as the backbone for product information sharing and cooperation between sites.



Automated Facilities

Fulfilling the complex challenges involved in R&D requires continuous investment in human resources, design processes, and related testing equipment for wireless communication, RFID, drop thresholds, and thermal limits.

In 2009, Unitech implemented a new product lifecycle management system (PLM) that reduced product development cycles. Through this system, product development data and information are systematically managed and shared. Most importantly, this system has significantly reduced product development cycles. Today, PLM is highly integrated with Unitech's ERP and MES product tracking system to provide comprehensive product information.

Product Development Protocol

To ensure continued development of products of superior quality and reliability, Unitech follows a 6-phase Product Design Protocol.

DR1: Design Plan

The project manager further studies the product requirements, then issues the product draft plan (PDP). The PDP includes major product design, project schedule, resource allocation, and designates a project team for the product.

DR2: Design-Phase 1

The project manager issues the product design specification (PDS) based on PRD and PDP, creates the work breakdown sheet (WBS), and produces the solid mock-up prototype.

DR3: Design-Phase 2

The project team follows the PDS to design the hardware, software, firmware and mechanical parts of the product, and produces working samples for evaluation.

DR4: Design-Phase 3

The product quality testing team pre-verifies the engineering samples to ensure product design specification compliance. The project team prepares the product manual and engineering samples for safety certification pre-testing and beta testing.

DR5: Pilot-Run

The Manufacturing Team initiates the pilot run. All pilot run samples are verified and tested by the product quality testing lab for reliability and life tests. Production engineers provide the process evaluation and production yield rate improvement plan.

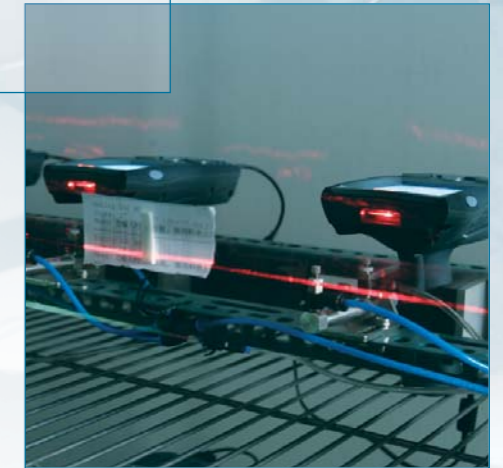
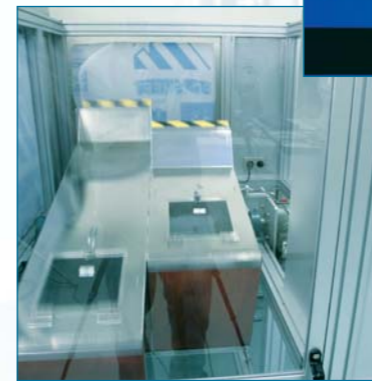
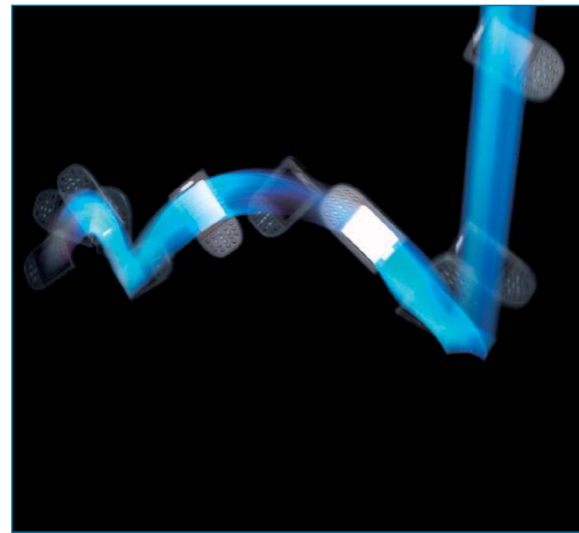
DR6: Product Review

Six months after every product launch, Unitech conducts a thorough review to ensure and enhance product quality. The product management, technical services and R&D teams review product service and market feedback reports to gather insight toward furthering product improvement and ensuring and enhancing product quality.

Quality Systems

Unitech believes quality begins with design. During the design phase, Unitech's quality assurance team works closely with R&D engineers to ensure compliance with the product quality test Procedure. The product quality test procedure includes testing for EMI, ESD, EFT, safety, environmental conditions, vibration, tumbling, dynamic burn-in, drop thresholds, wireless connectivity, and ALT system.

Unitech's continued investment in wireless technology development ensures that the communication platform in our devices consistently performs reliably and efficiently.



Quality in Purchasing

The experienced and professional IQC staff follows approved material specifications for inspection, testing and control of all materials using sophisticated testing equipment.

Quality in Manufacturing & Shipping

From IQC to IPQC to FQC, strict quality control guidelines are applied to each procedure and each product. Periodic equipment calibration, training and auditing are conducted to ensure the production quality standard is precisely followed.

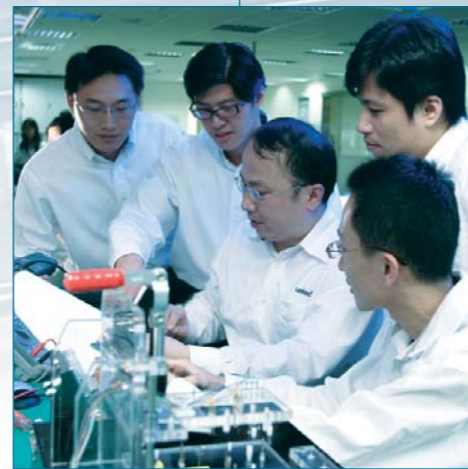
Professional Quality Assurance Team

The experienced and professional quality assurance team executes the mission of quality control. For example, Unitech utilizes vibration test instruments to ensure its products are being properly protected against real-world conditions and packaging is appropriate for worldwide transportation. Unitech also uses a temperature/humidity chamber and ESD testing bench to guarantee product reliability and endurance under extreme conditions and in harsh environments.

Manufacturing

Efficient & Flexible Manufacturing

Unitech uses manufacturing centers in Taipei and China. With separate in-house and sub-contracted production facilities, Unitech ensures maximum manufacturing flexibility and efficiency to meet the unique demands of production runs for a broad range of distinct product models.



Rigorous Testing

All Unitech products are put through a series of strict testing procedures, including functional testing by ICT and auto tester, burn-in, and reliability test. All test records are analyzed for reference and archived.

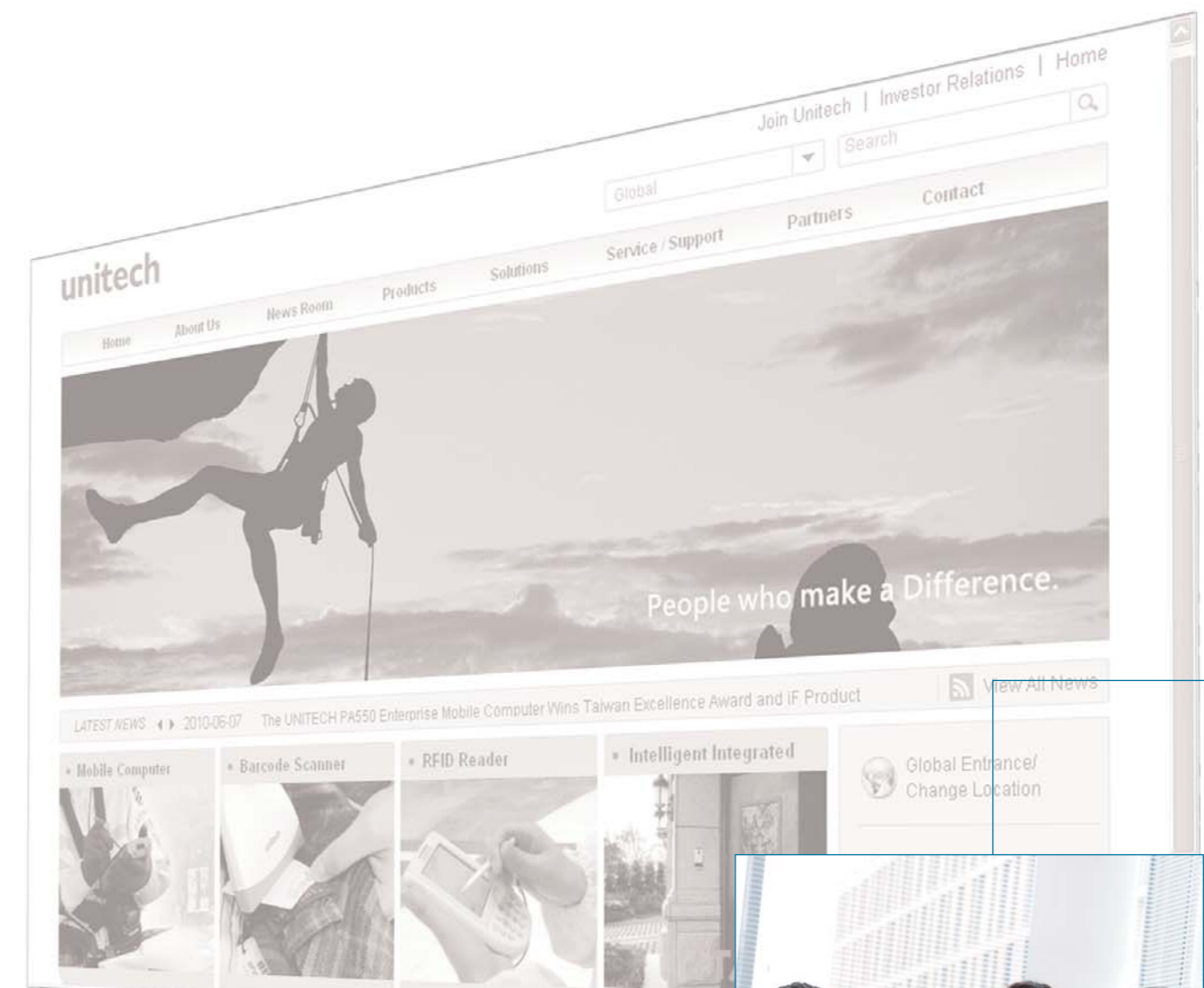
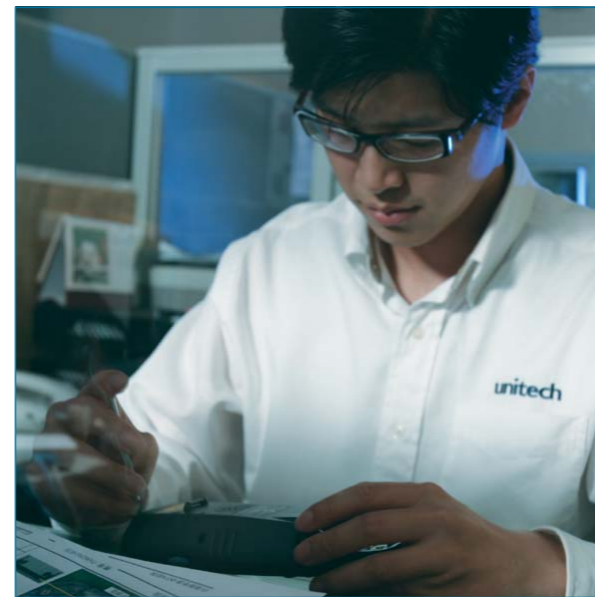
Logistics

To fulfill incoming orders, Unitech has established track and trace systems to ensure the movement of orders are precisely monitored and pinpointed.

Service & Support

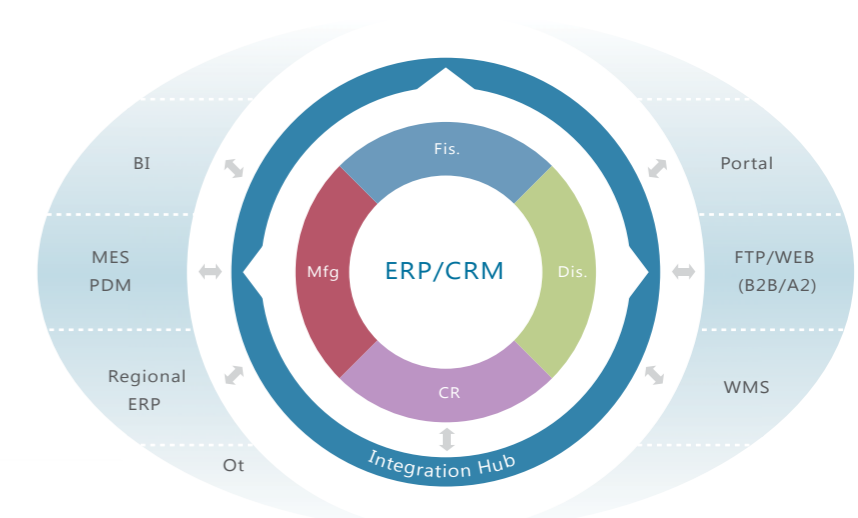
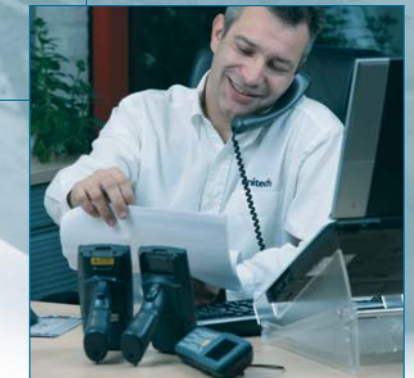
As it continues to introduce rugged mobile devices to market, Unitech understands that system compatibility is a key success factor for enterprise mobile solution installations. Unitech has invested heavily in building technical support teams at its global operation center and its subsidiaries to provide the best possible support to its worldwide partner network. The primary goal of these teams is to ensure that Unitech's mobile devices can be successfully delivered as an integral part of a mobile solution with maximum ease and efficiency.

These teams have become a benchmark resource for Unitech as it continues its commitment to support channel partners on pre-sales, co-visits and project installations. To further enhance service and support, Unitech developed a global process to manage cross-region projects and major international accounts.



Global Operation

Unitech products are available in over 35 countries with sales, distribution and technical support delivered by its six subsidiaries in North America, APAC, China, Europe, Japan, and Taiwan. These subsidiaries provide Unitech with access to the most up-to-date market information on a local basis, enabling Unitech to quickly anticipate changing market needs.



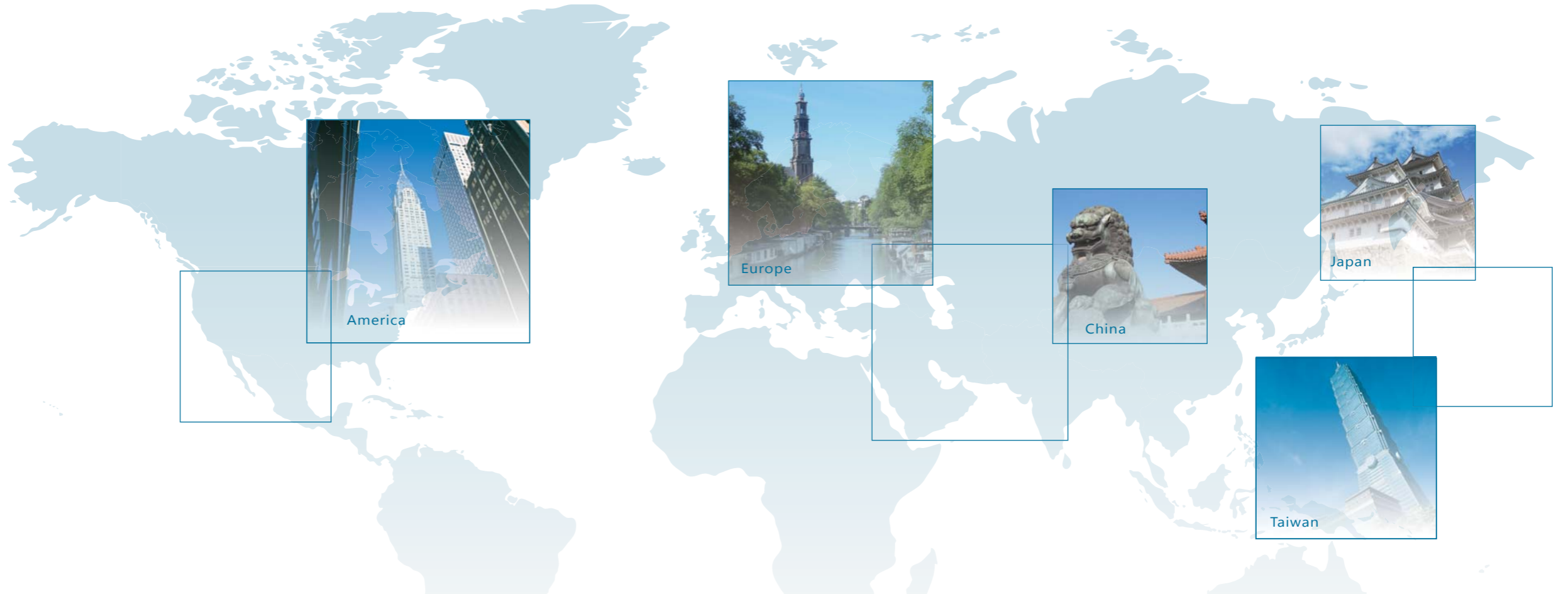
e-Platform

To ensure it delivers maximum responsiveness and to overcome potential time delays with transcontinental collaboration, Unitech has built an e-Platform that integrates with its ERP, PPM, MES, WMS and Portal.

Internet Presence

To support worldwide customers, Unitech has provided its partners with local websites providing up-to-the-minute product, service, technical, and application information whenever it is needed.

Contact



Unitech America

Los Angeles (North America Rep.)
Los Angeles (North America Rep.)
6182 Katella Ave Cypress, CA 90630, USA
Tel: +1-714-8916400
Fax: +1-714-8915050
E-mail: info@us.ute.com
info@can.ute.com
URL: <http://us.ute.com>
<http://can.ute.com>

Houston

 (Latin America Rep.)

17171 Park Row, Suite 210
Houston, TX 77084
Tel : +1-281-5990326
Fax: +1-832-5659998
E-mail: info@latin.ute.com
URL: <http://latin.ute.com>

Unitech Europe

Kapitein Hatterasstraat 19,
5015 BB TILBURG,
The Netherlands
Tel: +31-13-460-9292
Fax: +31-13-460-9293
E-mail: info@eu.ute.com
URL: <http://eu.ute.com>

Unitech China

Xiamen (Rep.)
2F., East of Guangye Building, Torch Hi-tech
Industry Development Zone, Xiamen, Fujan, China
Tel: +86-592-3109966
Fax: +86-592-3109966
E-mail: info@cn.ute.com
URL: <http://cn.ute.com>

Unitech Asia Pacific & Middle East

4Fl., No. 236, Shinhu 2nd Rd.,
114, Neihu Chiu, Taipei, Taiwan
Tel: +886-2-8912-1122
Fax: +886-2-8912-1850
Email: info@apac.ute.com
info@mideast.ute.com
info@india.ute.com
URL: <http://apac.ute.com>
<http://mideast.ute.com>

Unitech Japan

Kayabacho Nagaoka Building
8F 1-5-19 Shinkawa, Chuo-ku,
Tokyo,104-0033
Tel: +81-3-3523-2766
Fax: +81-3-3523-3766
E-mail: info@jp.ute.com
URL: <http://jp.ute.com>

Unitech Taiwan

4Fl., No. 236, Shinhu 2nd Rd., Neihu Chiu,
Taipei, Taiwan 114, R.O.C.
Tel: +886-2-2791-7988
Fax: +886-2-8791-9541
Email: barcode@tw.ute.com
<http://tw.ute.com>

OEM / ODM

2F, No. 132, Lane 235, Pao-Chiao Rd.,
231, Hsin-Tien City, Taipei Hsien, Taiwan
Tel: +886-2-8912-1122
Fax: +886-2-8912-1810
Email: sbd-sales@tw.ute.com
URL: <http://www.ute.com>

Global Operation Center

5F, No. 136, Lane 235, Pao-Chiao Rd.,
231, Hsin-Tien City, Taipei Hsien, Taiwan
Tel: +886-2-8912-1122
Fax: +886-2-8912-1810
Email: info@hq.ute.com
URL: <http://www.ute.com>